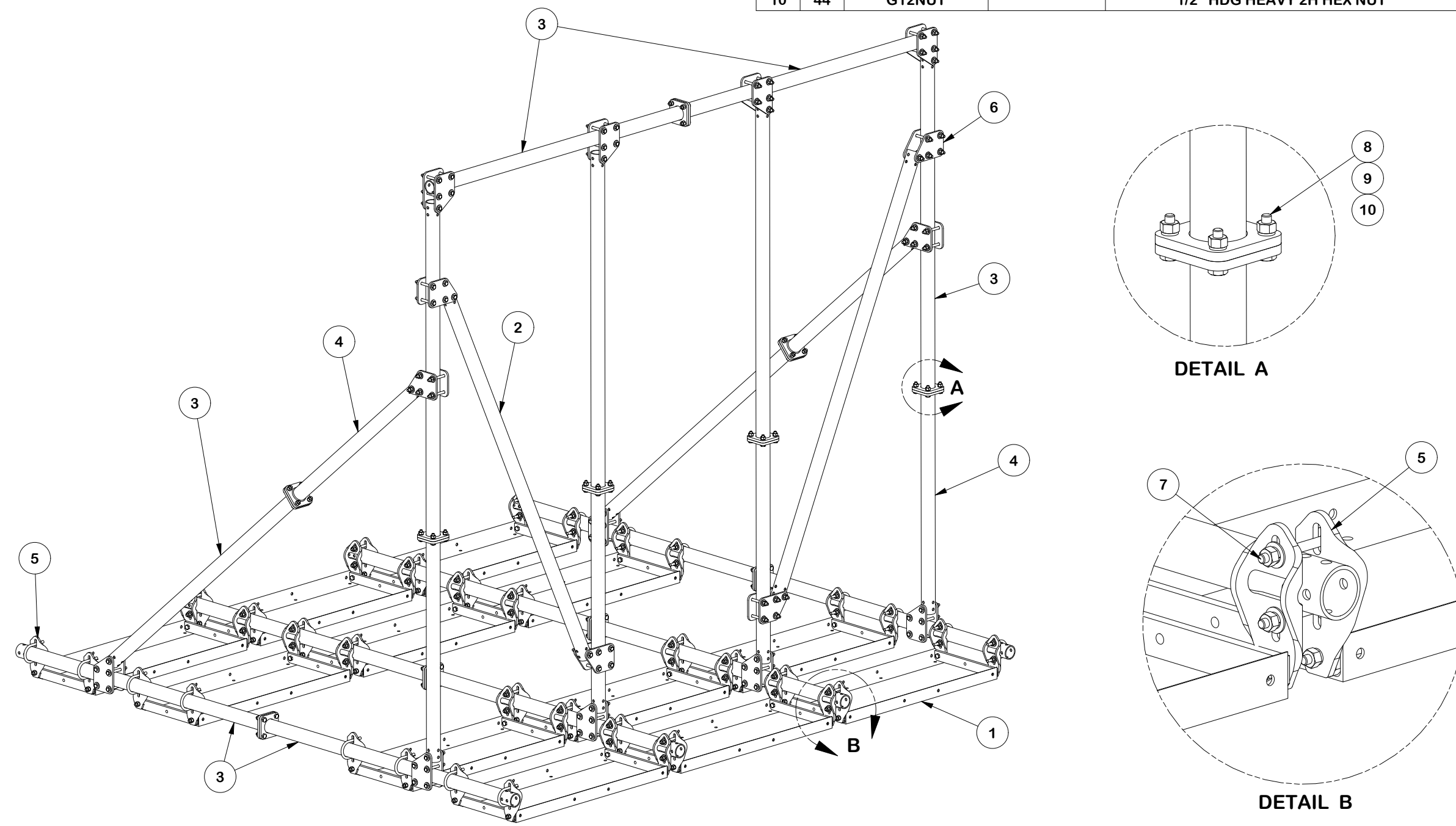


PARTS LIST										
ITEM	QTY	PART NO.	BOX NO.	PART DESCRIPTION	LENGTH	UNIT WT.	NET WT.			
1	12	X-251012		BALLAST TRAY WELDMENT - SITE PRO 1		36.58	438.97			
2	2	X-CSRT-P3096		2-7/8" DIA. PIPE X 96" LONG	96 in	48.99	97.99			
3	16	X-CSRT-3072FW		CSRT FLANGE PIPE WELDMENT 2-7/8" X 72"		39.16	626.49			
4	6	X-CSRT-3048FW		CSRT FLANGE PIPE WELDMENT 2-7/8" X 48"		26.85	161.07			
5	48	CSRT-PCB	P-CSRT-PCB	CSRT PIPE CLAMP BRACKET KIT		4.25	203.79			
6	16	CSRT-GP30	P-CSRT-GP30	CSRT GUSSET PLATE KIT		10.49	167.76			
7	32	G12045		1/2" x 4.5" HDG HEX BOLT GR5 FULL THREAD	4 1/2 in	0.30	9.54			
8	44	G1202		1/2" x 2" HDG HEX BOLT GR5	2 in	0.18	7.73			
9	44	G12LW		1/2" HDG LOCKWASHER	1/8 in	0.01	0.61			
10	44	G12NUT		1/2" HDG HEAVY 2H HEX NUT	7/8 in	0.07	3.15			
							<b>TOTAL WT. #</b>	<b>1761.91</b>		



**FINISH:**  
HOT DIP GALVANIZED.

**TOLERANCE NOTES**  
 TOLERANCES ON DIMENSIONS, UNLESS OTHERWISE NOTED ARE:  
 SAWED, SHEARED AND GAS CUT EDGES ( $\pm 0.030"$ )  
 DRILLED AND GAS CUT HOLES ( $\pm 0.030"$ ) - NO CONING OF HOLES  
 LASER CUT EDGES AND HOLES ( $\pm 0.010"$ ) - NO CONING OF HOLES  
 BENDS AND ANGLES ARE  $\pm 1/2$  DEGREE  
 ALL OTHER MACHINING ( $\pm 0.030"$ )  
 ALL OTHER ASSEMBLY ( $\pm 0.060"$ )


PATENT INFORMATION: WWW.SITEPRO1.COM/PATENTS

PROPRIETARY NOTE:  
 THE DATA AND TECHNIQUES CONTAINED IN THIS DRAWING ARE PROPRIETARY INFORMATION OF VALMONT INDUSTRIES AND CONSIDERED A TRADE SECRET. ANY USE OR DISCLOSURE WITHOUT THE CONSENT OF VALMONT INDUSTRIES IS STRICTLY PROHIBITED.

DESCRIPTION  
**CSRT SERIES™ 3 PIPE SLOPE MOUNT  
 12' FACE X 10' MAST X 12' DEPTH**

CPD NO. **NCS**  
 DRAWN BY **SDR 10/6/2025**  
 ENG. APPROVAL **11/11/2025**

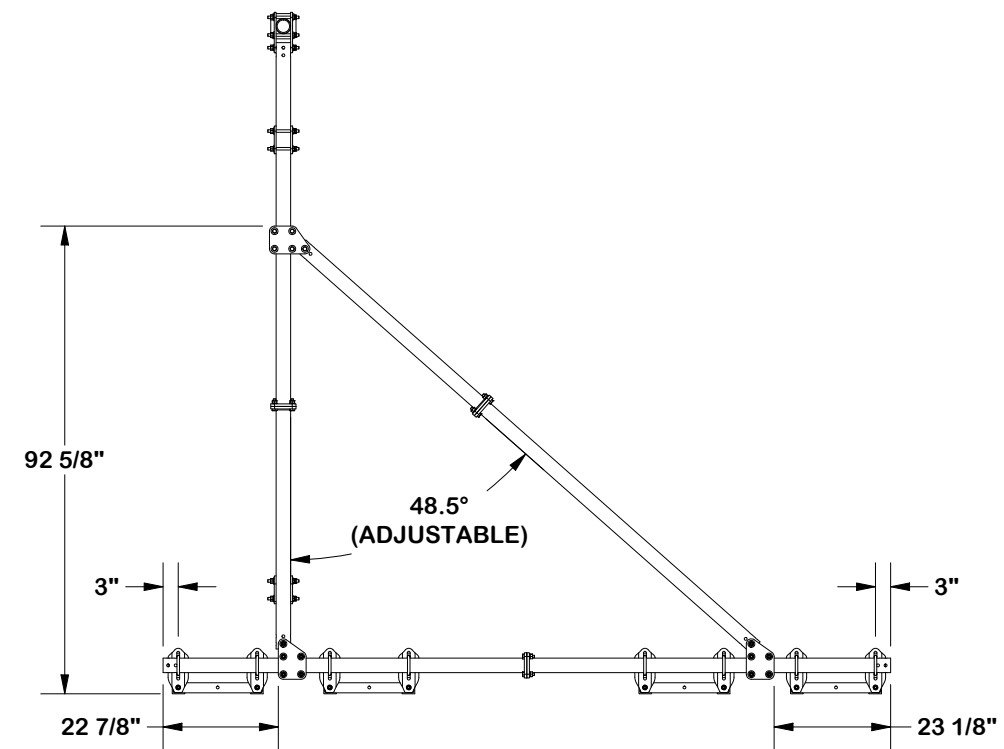
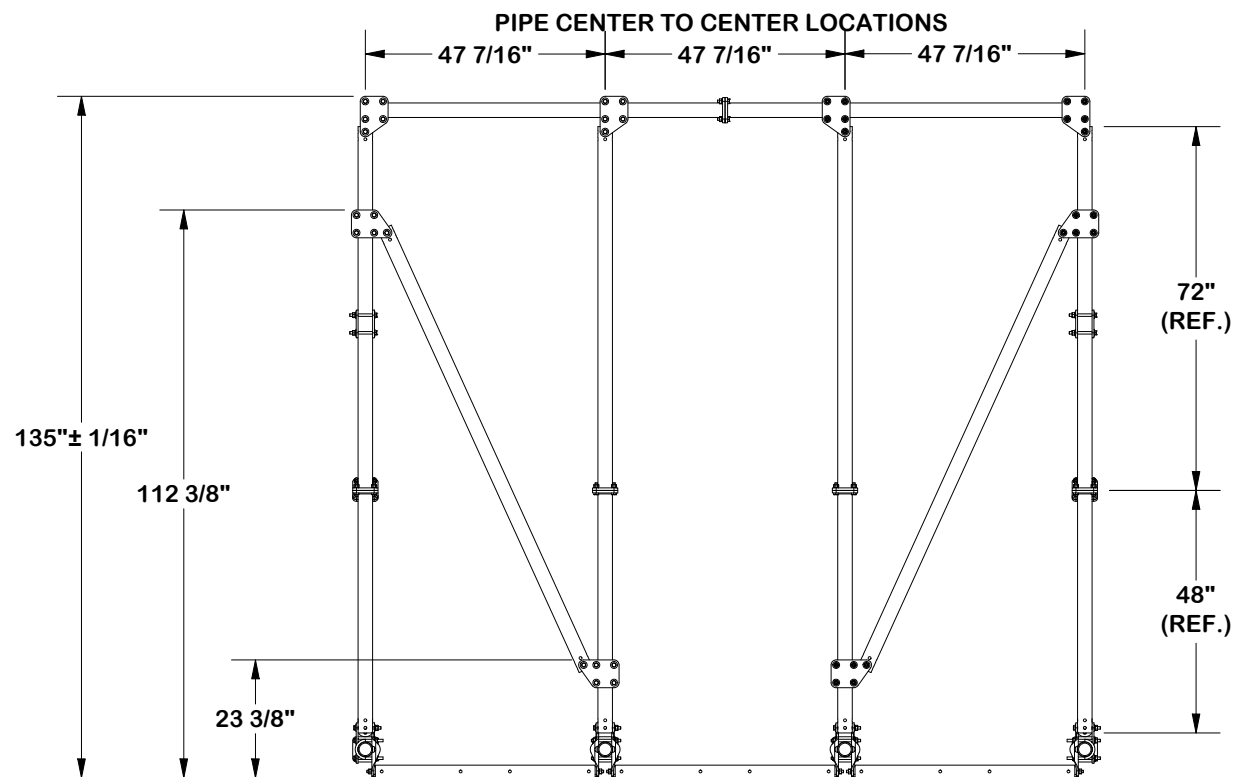
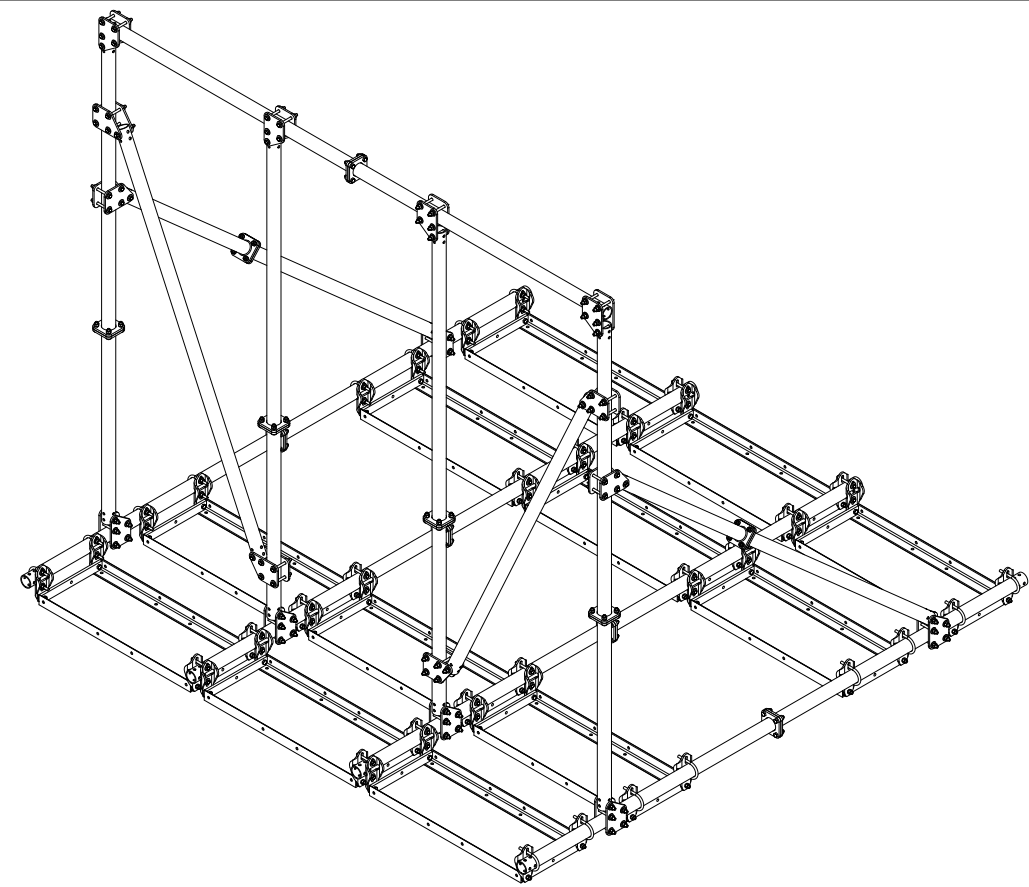
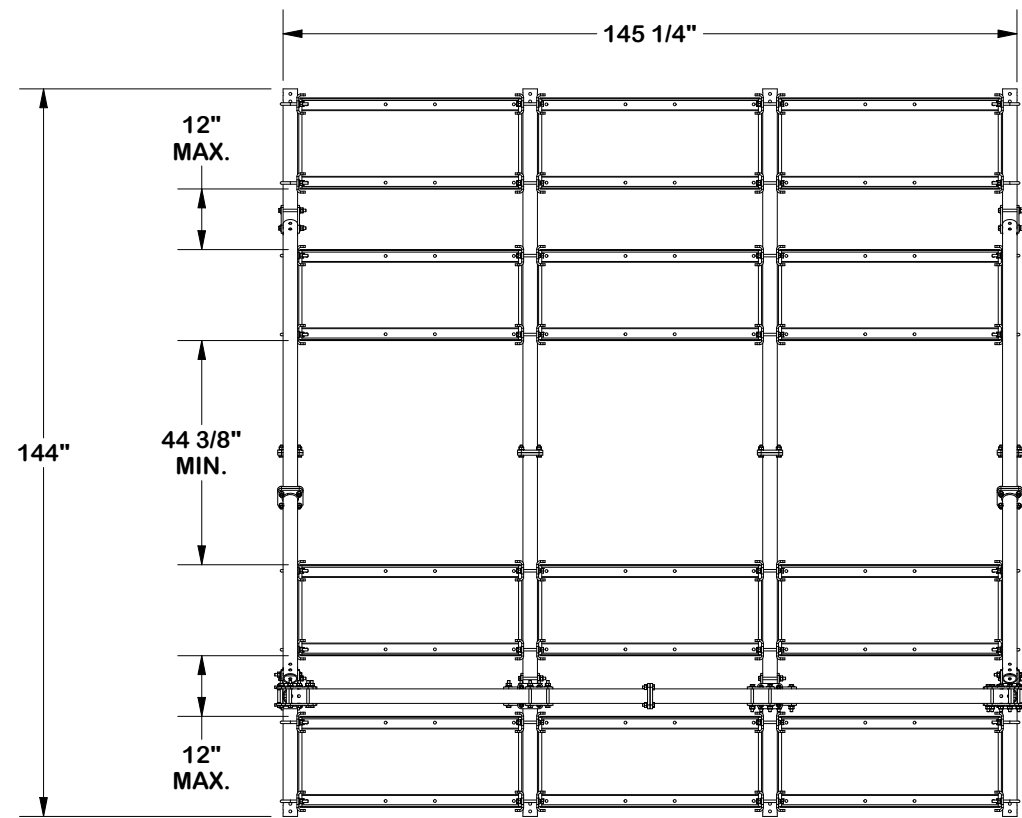
CLASS **87** SUB **02**  
 DRAWING USAGE **CUSTOMER**  
 CHECKED BY **ADB 11/11/2025**



A valmont COMPANY

Engineering Support Team:  
sp1engineering@valmont.com

PART NO. **CSRT4-121012**  
 DWG. NO. **CSRT4-121012**



**TOLERANCE NOTES**

TOLERANCES ON DIMENSIONS, UNLESS OTHERWISE NOTED ARE:  
 SAWED, SHEARED AND GAS CUT EDGES ( $\pm 0.030"$ )  
 DRILLED AND GAS CUT HOLES ( $\pm 0.030"$ ) - NO CONING OF HOLES  
 LASER CUT EDGES AND HOLES ( $\pm 0.010"$ ) - NO CONING OF HOLES  
 BENDS AND ANGLES ARE  $\pm 1/2$  DEGREE  
 ALL OTHER MACHINING ( $\pm 0.030"$ )  
 ALL OTHER ASSEMBLY ( $\pm 0.060"$ )

PATENT INFORMATION: WWW.SITEPRO1.COM/PATENTS

PROPRIETARY NOTE:  
 THE DATA AND TECHNIQUES CONTAINED IN THIS DRAWING ARE PROPRIETARY INFORMATION OF VALMONT INDUSTRIES AND CONSIDERED A TRADE SECRET. ANY USE OR DISCLOSURE WITHOUT THE CONSENT OF VALMONT INDUSTRIES IS STRICTLY PROHIBITED.

DESCRIPTION  
**CSRT SERIES™ 3 PIPE SLOPE MOUNT**  
**12' FACE X 10' MAST X 12' DEPTH**



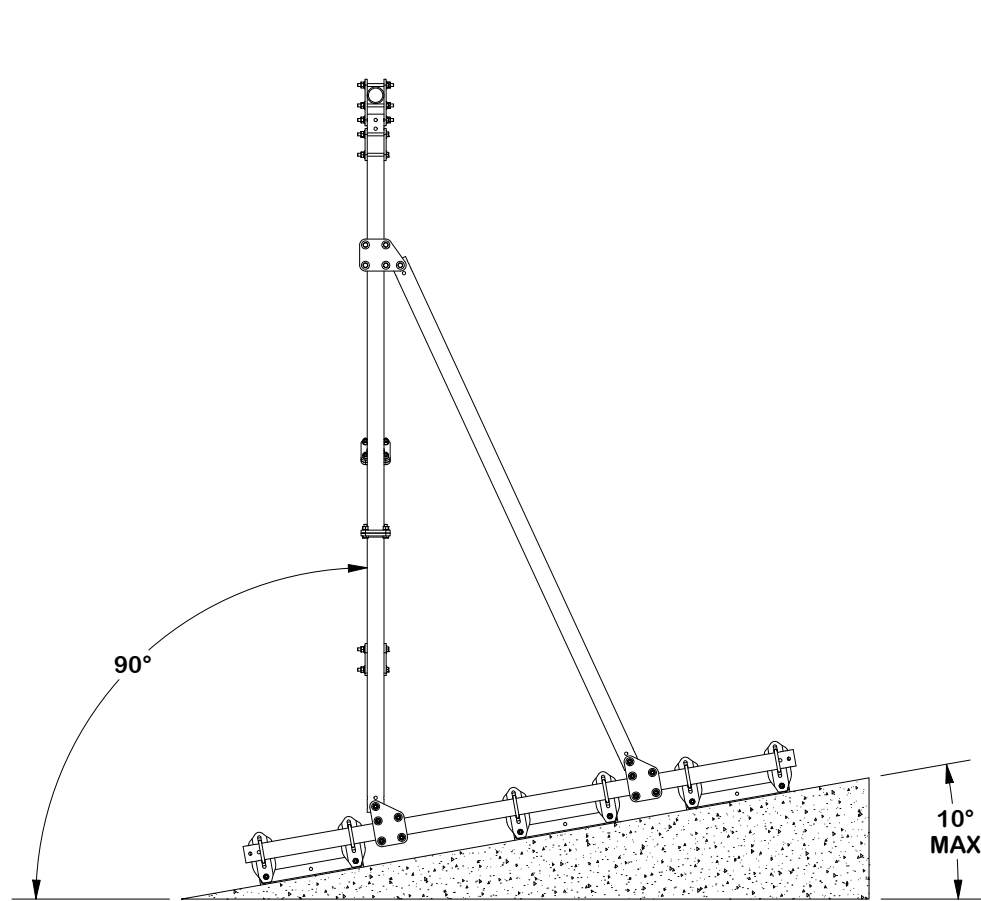
Engineering Support Team:  
 sp1engineering@valmont.com

A valmont COMPANY

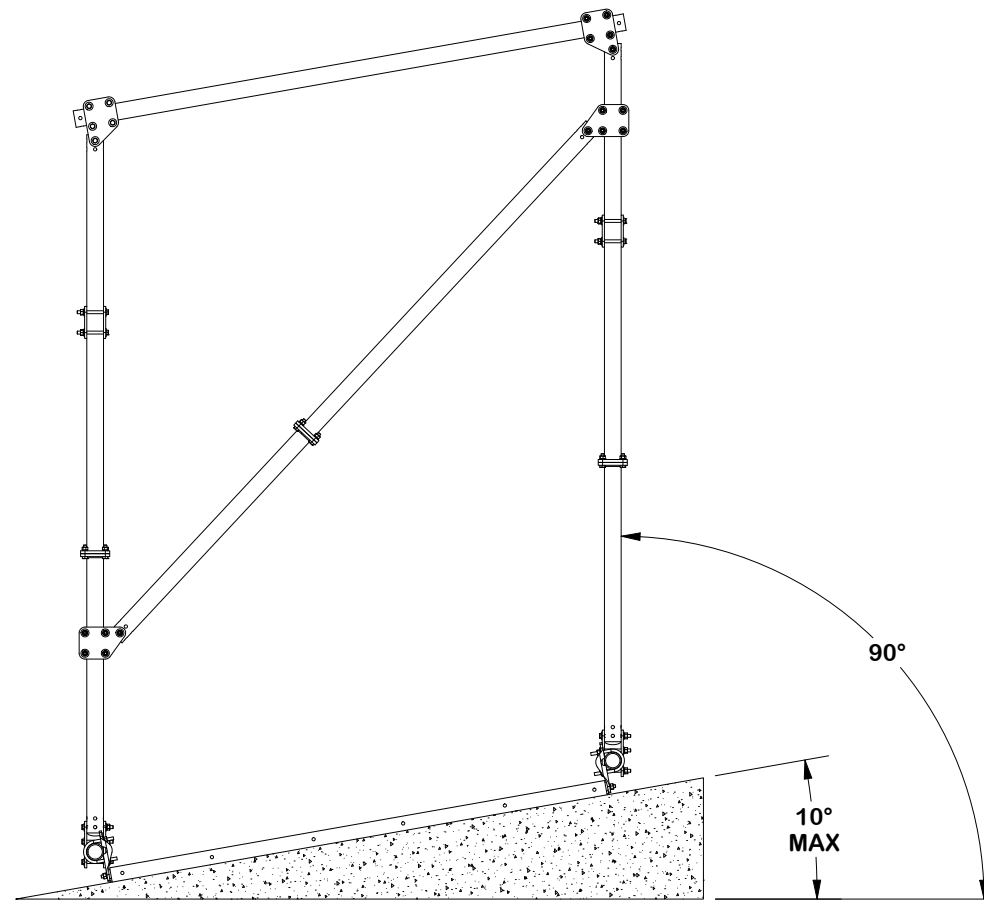
CPD NO. <b>NCS</b>	DRAWN BY <b>SDR 10/6/2025</b>	ENG. APPROVAL <b>11/11/2025</b>
CLASS <b>87</b>	SUB <b>02</b>	DRAWING USAGE <b>CUSTOMER</b>
CHECKED BY <b>ADB 11/11/2025</b>		

PART NO. <b>CSRT4-121012</b>
DWG. NO. <b>CSRT4-121012</b>

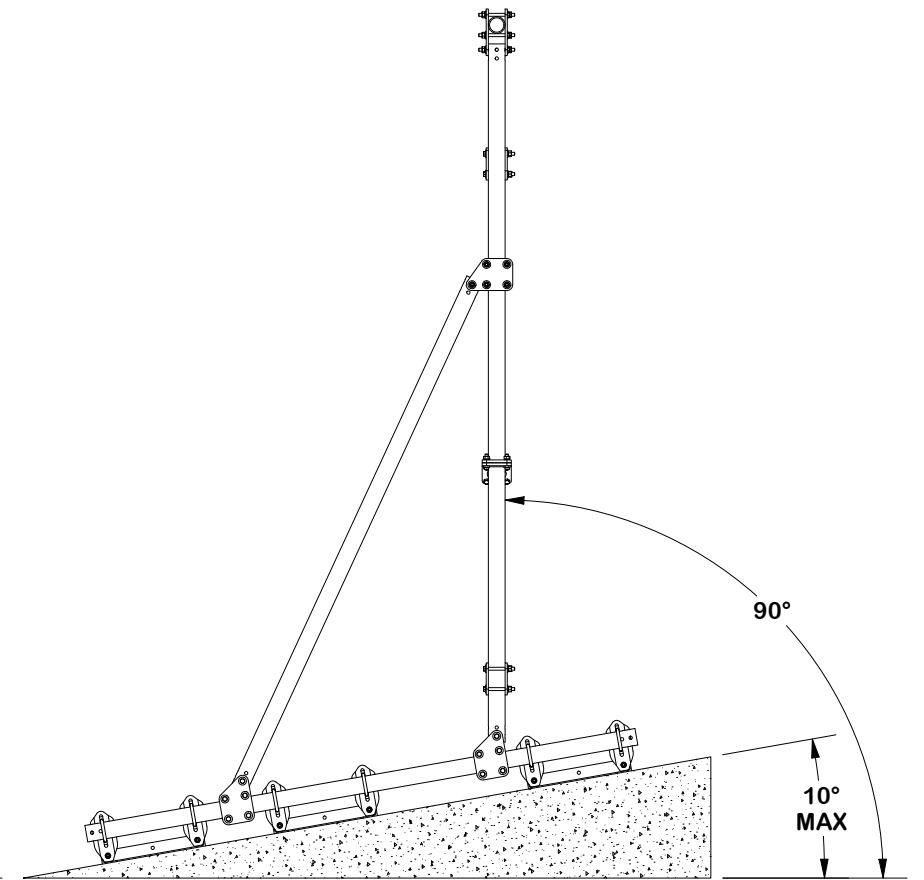
# CSRT™ SLOPE REFERENCE



RIGHT SIDE VIEW  
FRONT SLOPE



FRONT VIEW  
SIDE SLOPE



LEFT SIDE VIEW  
BACK SLOPE

## TOLERANCE NOTES

TOLERANCES ON DIMENSIONS, UNLESS OTHERWISE NOTED ARE:  
 SAWED, SHEARED AND GAS CUT EDGES ( $\pm 0.030"$ )  
 DRILLED AND GAS CUT HOLES ( $\pm 0.030"$ ) - NO CONING OF HOLES  
 LASER CUT EDGES AND HOLES ( $\pm 0.010"$ ) - NO CONING OF HOLES  
 BENDS AND ANGLES ARE  $\pm 1/2$  DEGREE  
 ALL OTHER MACHINING ( $\pm 0.030"$ )  
 ALL OTHER ASSEMBLY ( $\pm 0.060"$ )

PATENT INFORMATION: WWW.SITEPRO1.COM/PATENTS

PROPRIETARY NOTE:  
 THE DATA AND TECHNIQUES CONTAINED IN THIS DRAWING ARE PROPRIETARY INFORMATION OF VALMONT INDUSTRIES AND CONSIDERED A TRADE SECRET. ANY USE OR DISCLOSURE WITHOUT THE CONSENT OF VALMONT INDUSTRIES IS STRICTLY PROHIBITED.

## DESCRIPTION

CSRT SERIES™ 3 PIPE SLOPE MOUNT  
 12' FACE X 10' MAST X 12' DEPTH

CPD NO.	DRAWN BY	ENG. APPROVAL
NCS	SDR 10/6/2025	11/11/2025
CLASS	DRAWING USAGE	CHECKED BY
87	CUSTOMER	ADB 11/11/2025

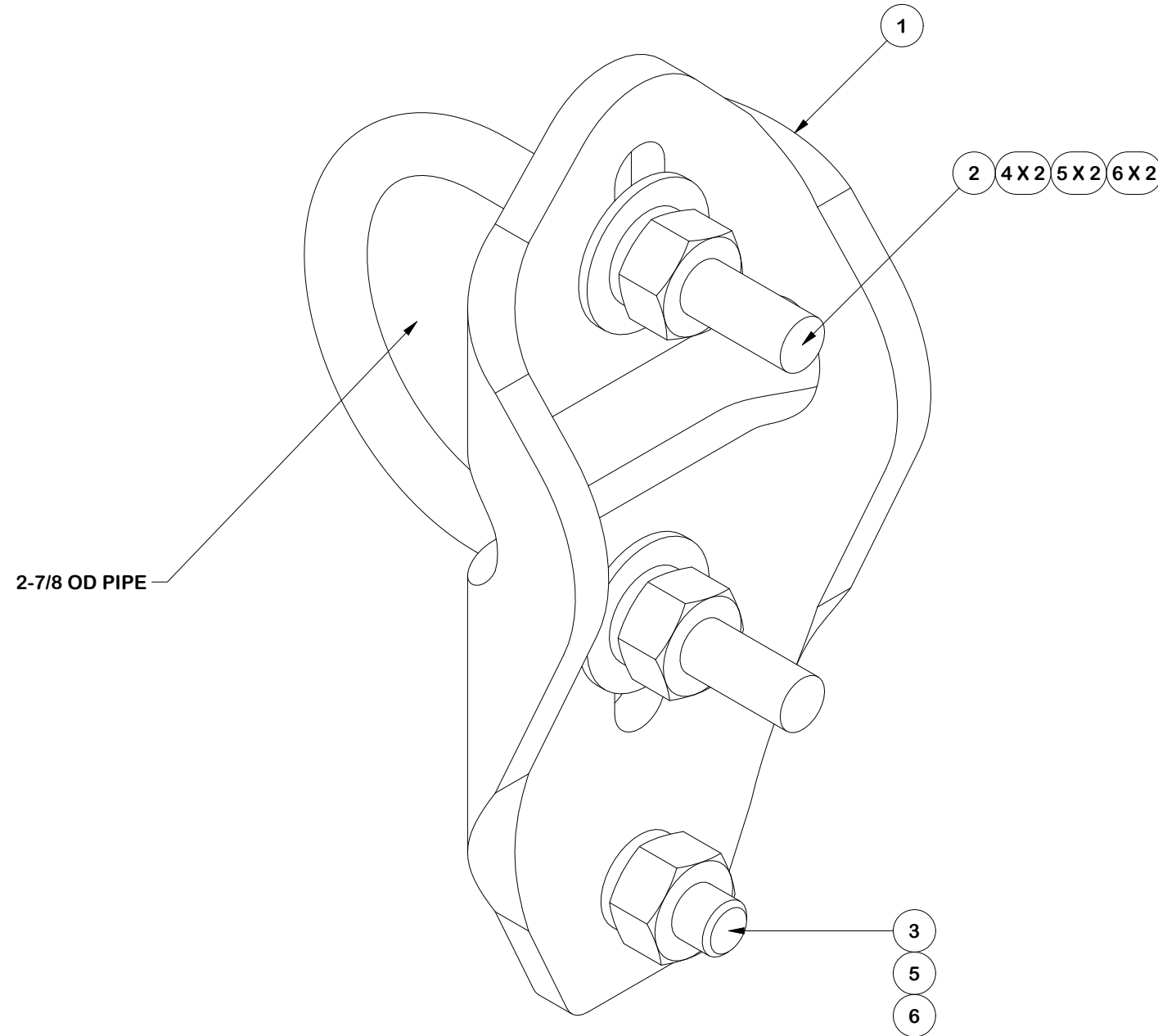


A valmont COMPANY

Engineering  
 Support Team:  
 sp1engineering@valmont.com

PART NO.	CSRT™ SLOPE REF
DWG. NO.	CSRT4-121012

PARTS LIST						
ITEM	QTY	PART NO.	PART DESCRIPTION	LENGTH	UNIT WT.	NET WT.
1	1	X-CSRT-PCB	PIPE CONNECTION BRACKET	12 in	3.01	3.01
2	1	X-UB1300	1/2" X 3" X 5" X 2" GALV U-BOLT		0.74	0.74
3	1	G1202	1/2" x 2" HDG HEX BOLT GR5	2 in	0.18	0.18
4	2	G12FW	1/2" HDG USS FLATWASHER	3/32 in	0.03	0.07
5	3	G12LW	1/2" HDG LOCKWASHER	1/8 in	0.01	0.04
6	3	G12NUT	1/2" HDG HEAVY 2H HEX NUT	7/8 in	0.07	0.21
					TOTAL WT. #	4.25



FINISH:  
HOT DIP GALVANIZED.

### TOLERANCE NOTES

TOLERANCES ON DIMENSIONS, UNLESS OTHERWISE NOTED ARE:  
 SAWED, SHEARED AND GAS CUT EDGES ( $\pm 0.030"$ )  
 DRILLED AND GAS CUT HOLES ( $\pm 0.030"$ ) - NO CONING OF HOLES  
 LASER CUT EDGES AND HOLES ( $\pm 0.010"$ ) - NO CONING OF HOLES  
 BENDS AND ANGLES ARE  $\pm 1/2$  DEGREE  
 ALL OTHER MACHINING ( $\pm 0.030"$ )  
 ALL OTHER ASSEMBLY ( $\pm 0.060"$ )

PATENT INFORMATION: WWW.SITEPRO1.COM/PATENTS

PROPRIETARY NOTE:  
 THE DATA AND TECHNIQUES CONTAINED IN THIS DRAWING ARE PROPRIETARY INFORMATION OF VALMONT INDUSTRIES AND CONSIDERED A TRADE SECRET. ANY USE OR DISCLOSURE WITHOUT THE CONSENT OF VALMONT INDUSTRIES IS STRICTLY PROHIBITED.

DESCRIPTION  
**CSRT SERIES™ 3 PIPE SLOPE MOUNT  
 12' FACE X 10' MAST X 12' DEPTH**

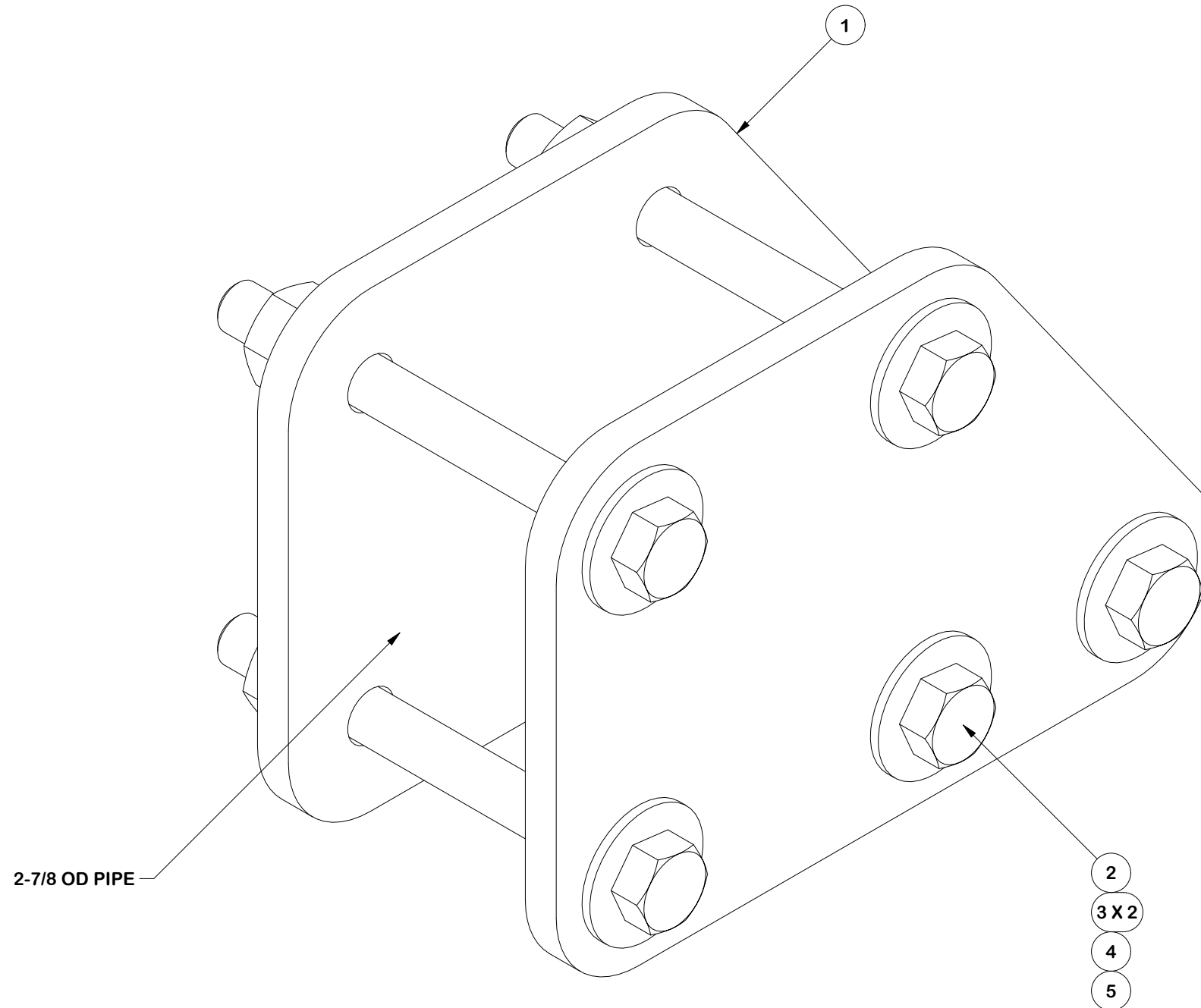


Engineering  
 Support Team:  
 sp1engineering@valmont.com

CPD NO. <b>NCS</b>	DRAWN BY <b>SDR 10/6/2025</b>	ENG. APPROVAL <b>11/11/2025</b>
CLASS <b>87</b>	SUB <b>02</b>	DRAWING USAGE <b>CUSTOMER</b>
CHECKED BY <b>ADB 11/11/2025</b>		

PART NO. <b>CSRT-PCB</b>	PAGE 4 OF 5
DWG. NO. <b>CSRT4-121012</b>	

PARTS LIST						
ITEM	QTY	PART NO.	PART DESCRIPTION	LENGTH	UNIT WT.	NET WT.
1	2	X-CSRT-GP30	3" GUSSET PLATE	12 in	4.04	8.09
2	5	G1205	1/2" x 5" HDG HEX BOLT GR5 FULL THREAD	5 in	0.33	1.63
3	10	G12FW	1/2" HDG USS FLATWASHER	3/32 in	0.03	0.34
4	5	G12LW	1/2" HDG LOCKWASHER	1/8 in	0.01	0.07
5	5	G12NUT	1/2" HDG HEAVY 2H HEX NUT	7/8 in	0.07	0.36
					TOTAL WT. #	10.49



**FINISH:**  
HOT DIP GALVANIZED.

**TOLERANCE NOTES**

TOLERANCES ON DIMENSIONS, UNLESS OTHERWISE NOTED ARE:  
 SAWED, SHEARED AND GAS CUT EDGES ( $\pm 0.030"$ )  
 DRILLED AND GAS CUT HOLES ( $\pm 0.030"$ ) - NO CONING OF HOLES  
 LASER CUT EDGES AND HOLES ( $\pm 0.010"$ ) - NO CONING OF HOLES  
 BENDS AND ANGLES ARE  $\pm 1/2$  DEGREE  
 ALL OTHER MACHINING ( $\pm 0.030"$ )  
 ALL OTHER ASSEMBLY ( $\pm 0.060"$ )

PATENT INFORMATION: WWW.SITEPRO1.COM/PATENTS

PROPRIETARY NOTE:  
 THE DATA AND TECHNIQUES CONTAINED IN THIS DRAWING ARE PROPRIETARY INFORMATION OF VALMONT INDUSTRIES AND CONSIDERED A TRADE SECRET. ANY USE OR DISCLOSURE WITHOUT THE CONSENT OF VALMONT INDUSTRIES IS STRICTLY PROHIBITED.

DESCRIPTION  
**CSRT SERIES™ 3 PIPE SLOPE MOUNT  
 12' FACE X 10' MAST X 12' DEPTH**

CPD NO. <b>NCS</b>	DRAWN BY <b>SDR 10/6/2025</b>	ENG. APPROVAL <b>11/11/2025</b>
CLASS <b>87</b>	SUB <b>02</b>	DRAWING USAGE <b>CUSTOMER</b>
CHECKED BY <b>ADB 11/11/2025</b>		



Engineering Support Team:  
 sp1engineering@valmont.com

PART NO. <b>CSRT-GP30</b>
DWG. NO. <b>CSRT4-121012</b>